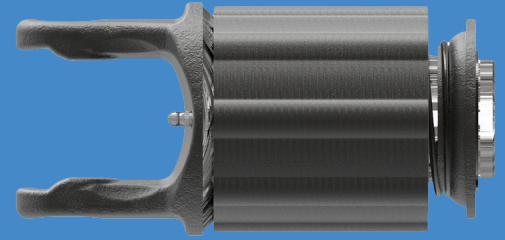




Weasler[®]
a CentroMotion brand

Econo-Baler CV Shaft

Keep your round baler running through the season with quality, cost-effective aftermarket PTO drive shafts from a trusted brand.




Round Baler Shafts

Designed for continuous, heavy-duty, all-purpose use, the Econo-Baler CV Shaft meets the rigorous requirements of all your bailing needs.



Performance Benefits

- Interchangeable with several popular brand models
- Tri-lobe profile telescoping members 
- Utilizes Weasler's patented 80-degree CV Joint for optimal performance
- Includes ratchet clutch for overload protection
- Easy Lock Guard allows quick and easy PTO shield removal and re-assembly
- Adjustable design or cut-to-length capabilities
- Customer-dedicated engineering and sales support



Part #	Tractor Yoke	Implement Yoke	OAL Compressed Length → OAL Max Running Length	Model Compatibility*
14586449	1 3/8 inch x 6-spline	1 3/8 inch x 6-spline Ratchet Clutch	61.58 inches → 78.53 inches	Vermeer 504, 505 MCL 5400, 5410, 5500 Rebel

*NOTE: May fit other models. Please verify correct configuration before ordering.