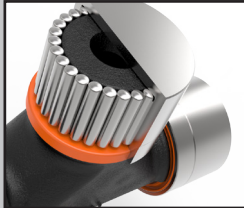




Weasler®

CROSS & BEARING KIT

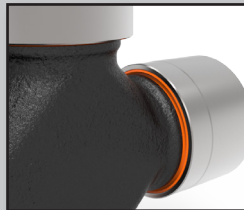
DESIGN FEATURES



Larger roller bearings



High temperature triple lipped seal keeps grease in and contaminants out



E-Kits can be recognized by the orange seal

- Bushing Lube located on the cup provides easier access for lubrication.
- E-Kits are available for all series and Standard kits can be upgraded to E-Kits.
- Manufactured with high quality steel for increased strength.

Extended Lubrication Kit



E-kits provide increased capacity and extended lubrication intervals with a lube cycle of 50 - 250 hours and are interchangeable with standard cross and bearing kits. This is achieved by providing an improved seal and roller bearings design, which results in a longer life cycle.

PERFORMANCE BENEFITS

- EXTENDED LUBRICATION CYCLE OF 50 TO 250 HOURS.
- INTERCHANGEABLE WITH STANDARD CROSS AND BEARING KITS AVAILABLE IN THE MARKET.
- EASIER GREASE ACCESS THROUGH THE GUARD, NO NEED TO REMOVE THE GUARD.
- HIGHER TORQUE CAPACITY AND LONGER LIFE REDUCES DOWNTIME - AVOID COSTLY CROSS AND BEARING KIT REPLACEMENTS.

Higher Value · Smarter Solutions



Weasler®

CROSS & BEARING KIT

MANUFACTURING LOCATIONS

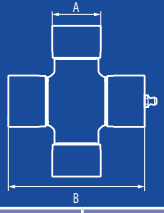
WEASLER ENGINEERING, INC.
 P.O. Box 558
 West Bend, Wisconsin, 53095 USA
 Tel: +1 (262) 338 2161
 Email: oesales@weasler.com

WEASLER ENGINEERING TURKEY
Power Packer Turkey
 Akhisar Organize Sanayii Bolgesi 5.
 Cadde No: 33
 Akhisar Manisa 45230
 Turkey
 Tel: +31 (0)24 64 89 100
 Email: sales@weasler.nl

WEASLER ENGINEERING KFT
 P.O. Box 262, H6001,
 Kecskemet, Hungary
 Tel: +31 (0)24 64 89 100
 Email: sales@weasler.nl

WEASLER ENGINEERING BRASIL
Turotest Medidores Ltda.
 Ave Luiz Merenda, 489 - Campanário,
 Diadema - SP, 09931-390
 Brasil
 Tel: +55 (11) 40927204
 Email: info.sa@weasler.com

Extended Lubrication Kit

Series	Cross Kits		540 RPM		1000 RPM	
			Power R-Kit	Power E-Kit	Power R-Kit	Power E-Kit
	A [in]	B [in]	[HP]	[HP]	[HP]	[HP]
02	.59	1.50	-	4	-	7
07	.75	1.91	-	10	-	16
6	.97	2.28	14	19	21	29
12	1.06	2.50	19	26	29	40
14	1.13	2.62	28	38	44	58
35	1.25	3.20	51	70	79	108
44	1.31	4.00	77	103	119	158
55	1.53	4.30	106	137	164	211
77	1.78	4.96	-	171	-	264
			Power P-Kit	Power E-Kit	Power P-Kit	Power E-Kit
AB1	.87	2.13	15	19	23	29
AB2	.94	2.41	21	25	33	38
AB3	1.06	2.76	29	38	44	58
AB4	1.06	2.94	36	45	56	70
AB5	1.19	3.13	52	65	81	100
AB6	1.19	3.62	64	79	99	122
AB7N	1.37	3.70	79	94	122	145
AB8	1.38	4.19	100	120	154	185
AB9	1.61	4.25	120	151	185	232
AW10	.87	2.17	15	19	23	29
AW11	1.06	2.76	30	38	44	58
AW19	.75	1.91	8	-	13	-
AW20	.94	2.41	21	25	33	38
AW21	1.06	2.94	36	45	56	70
AW22	1.19	3.62	64	79	99	122
AW26	1.65	4.09	113	149	175	230
AW35	1.26	3.00	52	66	80	102

WE0101007-0817

For more information see our website: www.weasler.com