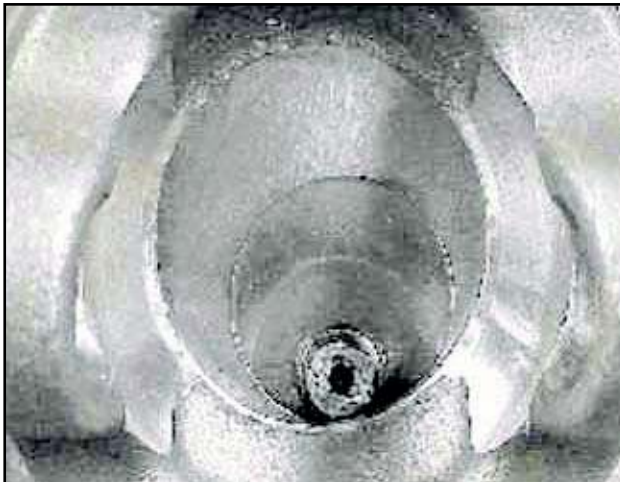




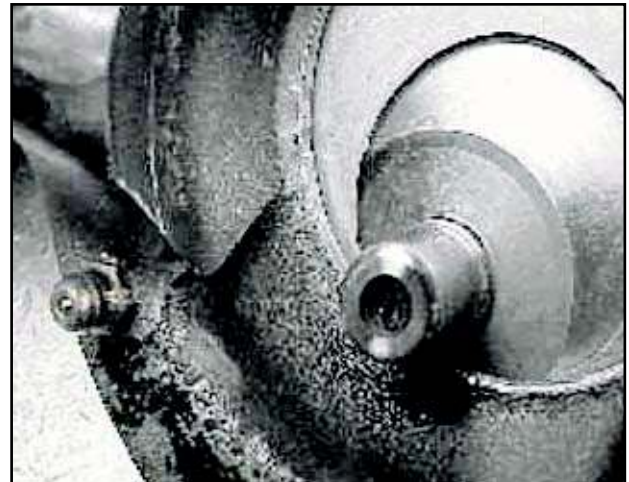
**Weasler®**

**80° CONSTANT VELOCITY JOINT  
OVER ANGLE OPERATING**

These pictures show damage resulting from turning an 80° CV joint beyond the 80° design limit while the driveline is operating. Both sides of the same center housing are shown. On side 1 the pin has sheared. On side 2 the pin remains intact but the center housing shows chatter marks from over-angle. This ball and socket yoke has a missing ball, while the retaining ring has been stretched and cracked.



**SIDE 1**



**SIDE 2**



**BALL & SOCKET YOKE**



**NEW UNUSED CENTER HOUSING**

**Weasler Engineering, Inc.**  
P.O. Box 558, West Bend, WI 53095 USA  
Tel: +1-262.338.2161, Fax: +1-262.338.3709  
E-mail: [oemsales@weasler.com](mailto:oemsales@weasler.com)  
web site: [www.weasler.com](http://www.weasler.com)

**Weasler Engineering BV**  
P.O. Box 266, 6600 AG, Wijchen, The Netherlands  
Tel: +31-24-64 89 100, Fax: +31-24-64 89 109  
E-mail: [sales@weasler.nl](mailto:sales@weasler.nl)  
web site: [www.weasler.nl](http://www.weasler.nl)

**Weasler Engineering Kft**  
P.O. Box 262, H6001, Kecskemet, Hungary  
Tel: +36-76-500410, Fax: +36-76-500 415  
E-mail: [sales@weasler.hu](mailto:sales@weasler.hu)