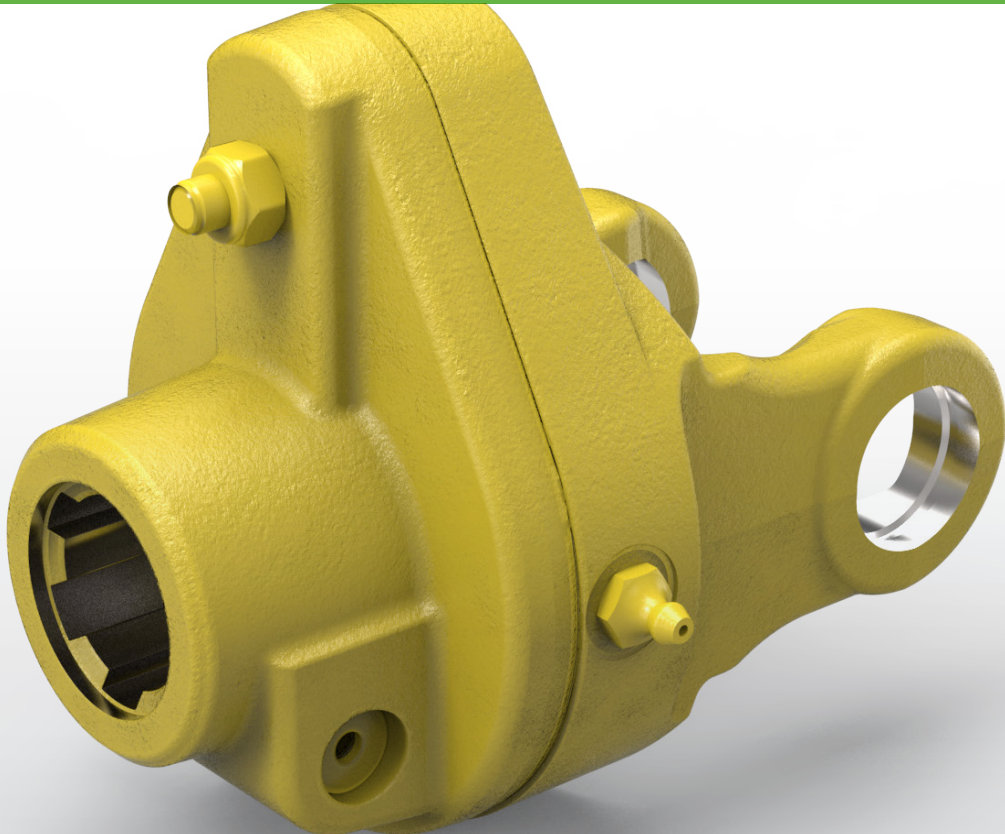




Weasler®

Shearbolt Clutch



The shearbolt clutch offers economical implement overload protection. The compact, efficient design disconnects the power source from the drivetrain when overload occurs. During disengagement, the design does not allow or generate damaging torque spikes or heat. After the operator replaces the easily accessible bolt, the machine can be restarted.

PERFORMANCE BENEFITS

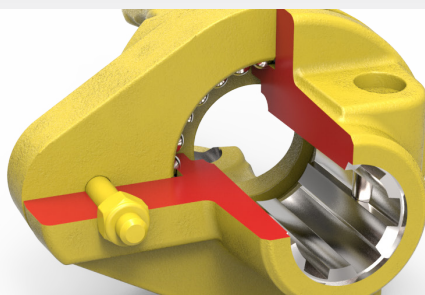
- Implement **overload protection**
- Minimal **maintenance**
- **Smooth disengaged operation**, no damaging torque spikes

Higher Value • Smarter Solutions



Weasler®

Shearbolt Clutch



Internal ball bearing with induction hardened races

DESIGN FEATURES

- Implement yoke
 - Shear bolt accessible for easy change out
- Speeds to 2000 rpm
- Broad range of shear torque settings
- Yoke options include most North American and European series
- Performance
 - Induction hardened bolt holes provide good edge for consistent, repeatable shear
 - Reduces possibility of damage

This Weasler product is designed and developed for:



Snowblowers



Spreaders



Balers



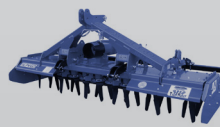
Feeder mixers



Auger wagons



Slurry tanks



Power harrows



Rakes/tedders