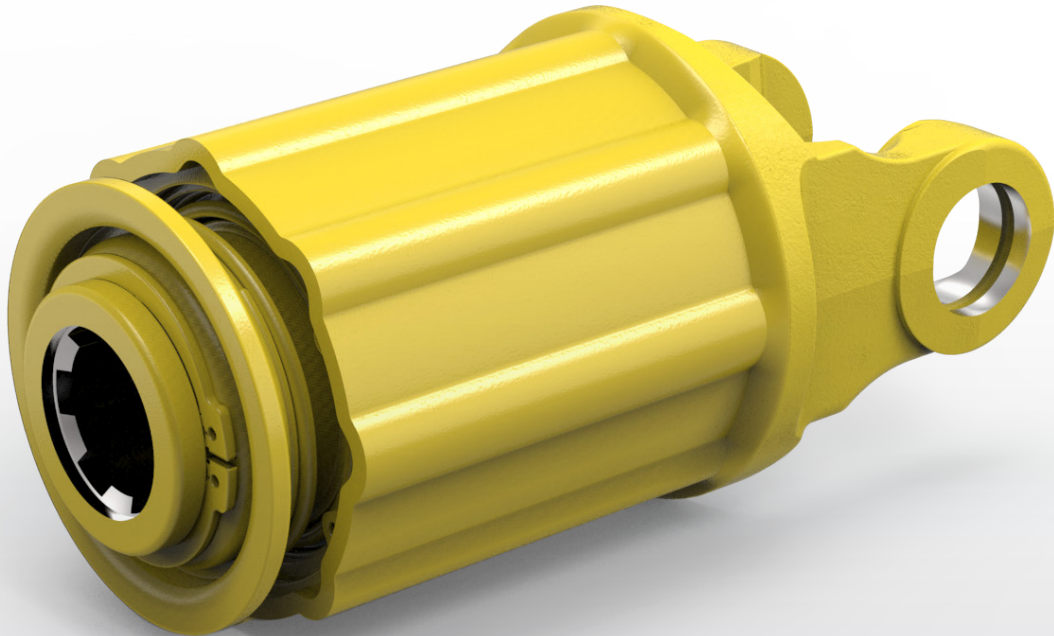




**Weasler®**

## Ratchet Clutch



*The ratchet clutch allows implement overload protection with a unique pulsating torque while disengaged. When the overload occurs, the torque is transmitted in pulses accompanied by an audible sound. This aids in pushing the blockage through. Therefore, the operator may not need to leave the operator seat or even slow down to clear the blockage. The clutch will re-engage when the transmitted torque drops below the calibrated torque value.*

### PERFORMANCE BENEFITS

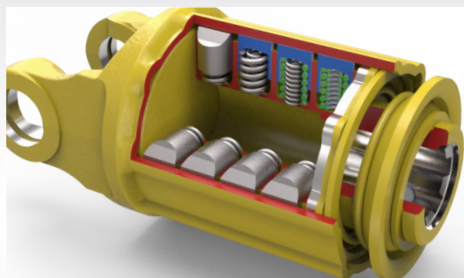
- Implement overload **protection**
- **Repeatable** overload setting
- **Torque pulses** while slipping aid in dislodging blockage for **increased productivity**
- Minimal **maintenance**
- **Audible** operator notification
- Tamper-resistant
- **Compact** (ø 100mm / 3-15/16") design offered with through shaft as well as drive shaft mounted configurations

**Higher Value • Smarter Solutions**

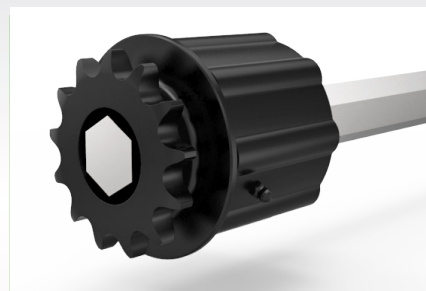
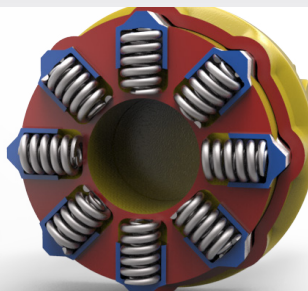


**Weasler®**

## Ratchet Clutch



Radial orientated coil springs and cams



Also available in through shaft configuration

### DESIGN FEATURES

- Available in either driveline or through shaft configurations
- Torque settings available from 100 to 1500 Nm
- Speeds up to 700 rpm
- Yoke options include most North American and European series

This Weasler product is designed and developed for:



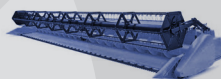
Balers  
(pick up)



Combine  
feeder house



Loader wagons  
(pick up)



Corn/grain Headers



Rakes/tedders