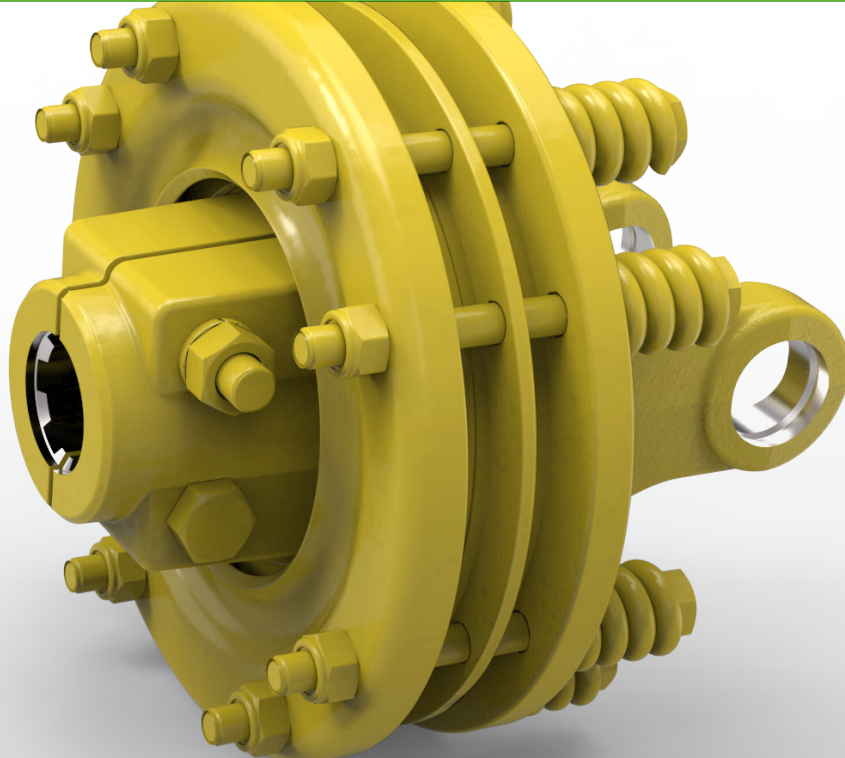




Weasler®

Friction Clutch



The Friction Clutch is the only torque limiter that has the ability to continuously transmit power (at a reduced level) while overloaded. This is valuable during startup of high inertia machines, as well as for leveling out torsional fluctuations due to high cyclic loads.

PERFORMANCE BENEFITS

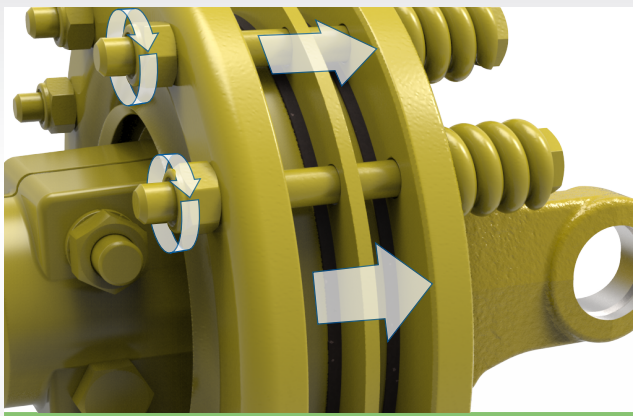
- Implement **overload protection**
- **Easy maintenance**
- **Easily adjustable** to optimize the capacity of the implement
- **Smooth** operation, **no damaging** torque spikes
- **Wide torque range** (750 – 2000 Nm)
- 2 sizes (Outer Diameter 180 or 200 Nm)
- Offered in **various drive shaft series** and **hub configurations**
- Available **with or without overrunning**

Higher Value • Smarter Solutions

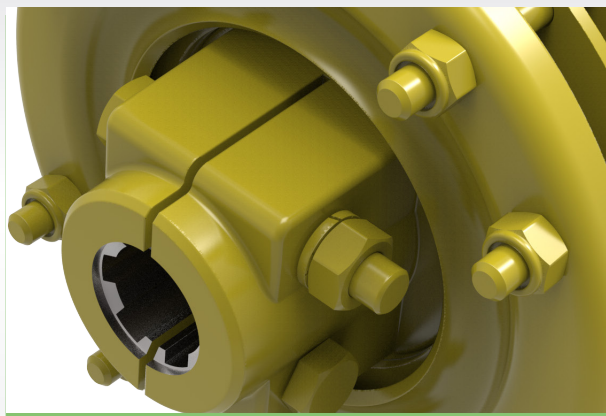


Weasler®

Friction Clutch



Easily adjustable to optimize the capacity of the implement

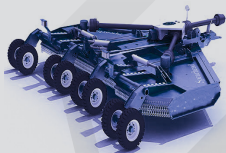


Standard connection with clamp bolts



Makes use of 2 or 4 friction plates

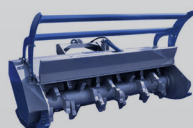
This Weasler Product is designed and developed for:



Rotary cutters



Straw blowers



Mulchers



Mowers



Feeder mixers