

## Cross and bearing kits



*Weasler offers two types of cross and bearing kits, referred to as P-kit and E-kit. P-kits offer a high quality combined with a lube cycle of 8-50 hours which is acceptable for many applications. The E-kits, are especially developed for very demanding applications, providing increased capacity and extended lubrication intervals with a lube cycle of 50-250 hours.*

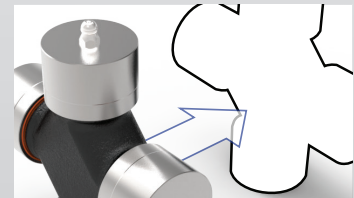
### DESIGN FEATURES



**Bushing Lube (BL)** - The use of bushing lube improves ease of lubrication by a better accessible grease nipple on the cup.



**Interchangeable** - P-kits and E-kits are interchangeable for all available series. This means that every Weasler PTO drive shaft with P-kits can still be upgraded to E-kits.



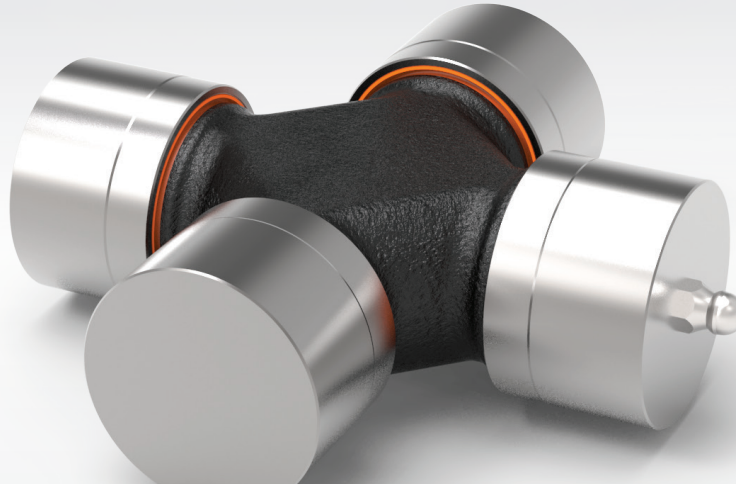
**Retrofit** - Weasler cross and bearing kits are also interchangeable with standard cross and bearing sets available in the market.

**Higher Value • Smarter Solutions**



**Weasler®**

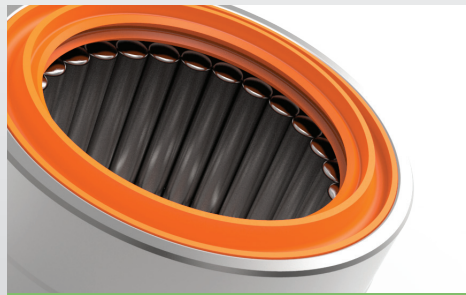
## E-kits



*E-Kits provide **increased capacity** and **extended lubrication intervals**. This is for example achieved by a different seal and roller bearings design, resulting in a longer lifecycle. Due to their superior performance, the E-kits are widely accepted and applicated by OEMs.*



E-kits can be recognized by the orange seal



The triple lipped seal, better keeps grease inside and contaminants outside



Larger roller bearings

### PERFORMANCE BENEFITS E-KITS

- Extended lubrication cycle of 50 to 250 hours
- Interchangeable with standard cross and bearing kits available in the market
- Reduced downtime – avoids costly cross and bearing kit replacements
- Interchangeable with standard kits ("P" kits)
- Higher Torque capacity & longer life
- High quality steel leads to increased strength
- Optimum needle bearing design for increased life