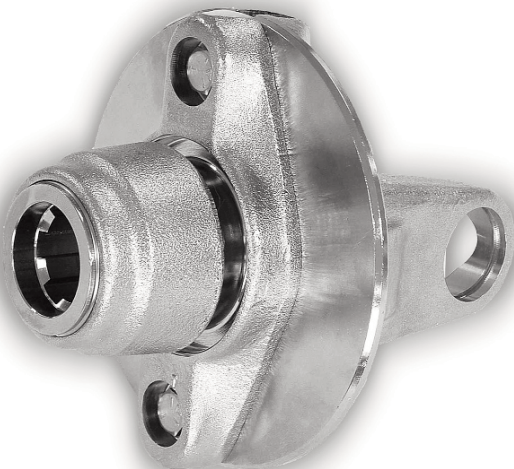




**Weasler®**

**TORQUE LIMITER**

## **SHEAR BOLT YOKE**



*The shear yoke offers simple, economical implement overload protection. Besides the traditional implement mounted configuration, the free motion and hidden bolt tractor shaft mounted\* options make hook-up and service more user friendly. The compact, efficient design disconnects the power source from the drivetrain when overload occurs. During disengagement, the design does not allow or generate damaging torque spikes or heat. After the operator replaces the easily accessible bolt, the machine can be restarted.*

## **PERFORMANCE BENEFITS**

---

- IMPLEMENT OVERLOAD PROTECTION
- MINIMAL MAINTENANCE
- NO DAMAGING HEAT GENERATION FOR HIGHER PRODUCTIVITY
- REPEATABLE OVERLOAD DISENGAGEMENT SETTING
- TAMPER RESISTANT
- SMOOTH DISENGAGED OPERATION, NO DAMAGING TORQUE SPIKES
- OFFERED WITH OR WITHOUT FREE MOTION, OVERRUNNING AND TRACTOR MOUNT\*

\*AVAILABLE FOR THE IMPLEMENT END ONLY IN EUROPE

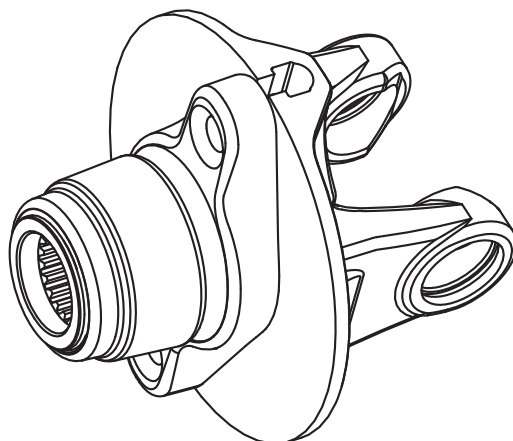
*Quality fits. Every time.*



# Weasler®

# TORQUE LIMITER

## SHEAR BOLT YOKE



### DESIGN FEATURES

- **TRACTOR YOKE (PATENTED)\***
  - HIDDEN SHEAR BOLT
  - COMPLIES WITH ASABE AND ISO STANDARDS
  - SLIDE COLLAR STYLE FOR 1-3/8 x 6, 1-3/8 x 21 AND 1-3/4 x 20 PTO SHAFTS
- **IMPLEMENT YOKE**
  - SHEAR BOLT ACCESSIBLE FOR EASY CHANGE OUT
- **FREE MOTION YOKE (PATENTED)**
  - SHEAR BOLT ACCESSIBLE FOR EASY CHANGE OUT
  - 60° FREE MOVEMENT FOR EASY HOOK-UP OF TRACTOR YOKE
- **PERFORMANCE**
  - INDUCTION HARDENED BOLT HOLES PROVIDE GOOD EDGE FOR CONSISTENT, REPEATABLE SHEAR
  - INTERNAL BALL BEARING WITH INDUCTION HARDENED RACES
  - REDUCES POSSIBILITY OF DAMAGE
- **AUTO-LOK ATTACHMENT AVAILABLE (PATENTED)**
- **SPEEDS TO 2000 RPM**
- **BROAD RANGE OF SHEAR TORQUE SETTINGS**

\*AVAILABLE FOR THE IMPLEMENT END ONLY IN EUROPE

Weasler Engineering, Inc.  
P.O. Box 558, West Bend, WI 53095 USA  
Tel: +1-262.338.2161, Fax: +1-262.338.3709  
E-mail: [oemsales@weasler.com](mailto:oemsales@weasler.com)  
web site: [www.weasler.com](http://www.weasler.com)

Weasler Engineering BV  
P.O. Box 266, 6600 AG, Wijchen, The Netherlands  
Tel: +31 (0)24 64 89 100, Fax: +31 (0)24 64 89 109  
E-mail: [sales@weasler.nl](mailto:sales@weasler.nl)  
web site: [www.weasler.com](http://www.weasler.com)

Weasler Engineering Kft  
P.O. Box 262, H6001, Kecskemet, Hungary  
Tel: +36 (0)76 500 410, Fax: +36 (0)76 500 415  
E-mail: [sales@weasler.nl](mailto:sales@weasler.nl)  
web site: [www.weasler.com](http://www.weasler.com)