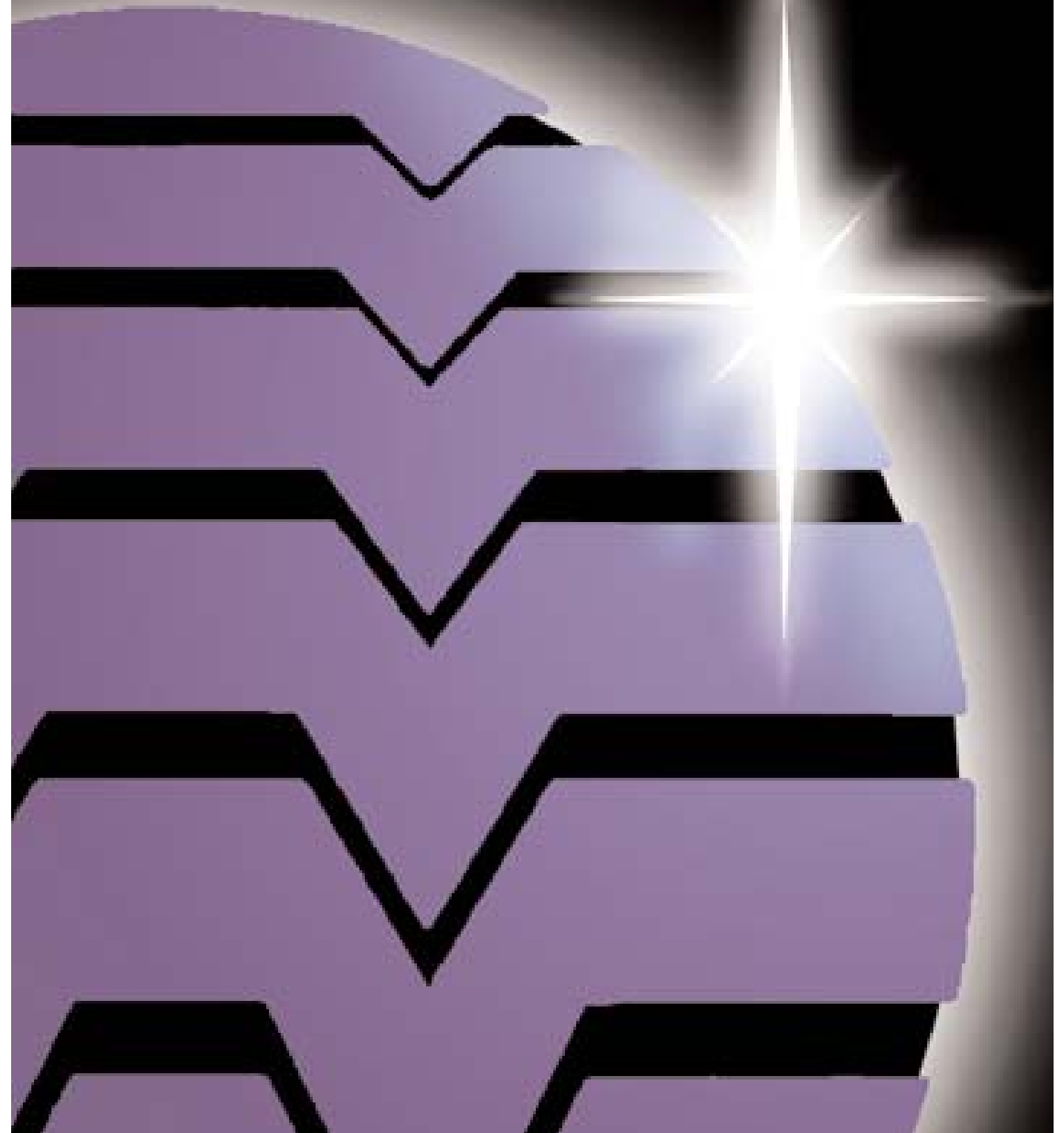
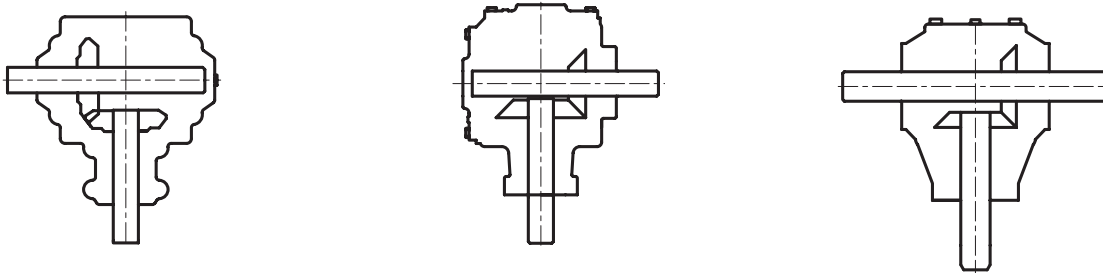


GEARBOXES

# Weasler



## 90° GEARBOXES



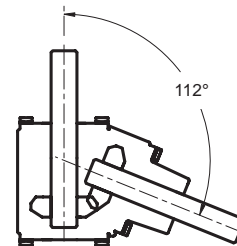
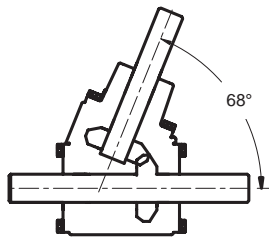
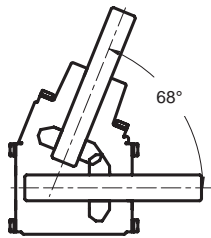
SERIES	HOUSING TYPE	MAX POWER RATING @ 1:1 RATIO				MAX SHAFT DIAMETER	
		540 RPM		1000 RPM		INCH	MM
		HP	KW	HP	KW		
1190	ONE PIECE	12	8.9	20	14.9	1.00	25.40
2190	ONE PIECE	20	14.9	35	26.1	1.25	31.75
4190	ONE PIECE	45	33.6	75	55.9	1.38	35.05
5190	ONE PIECE	80	59.7	120	89.5	1.50	38.10
6190	ONE PIECE	120	89.5	170	89.5	1.75	44.45

SERIES	HOUSING TYPE	MAX POWER RATING @ 1:1 RATIO				MAX SHAFT DIAMETER	
		540 RPM		1000 RPM		INCH	MM
		HP	KW	HP	KW		
1090	SPLIT CASE	12	8.9	20	14.9	1.00	25.40
2090	SPLIT CASE	20	14.9	35	26.1	1.25	31.75
4090	SPLIT CASE	45	33.6	75	55.9	1.38	35.05

### NOTE:

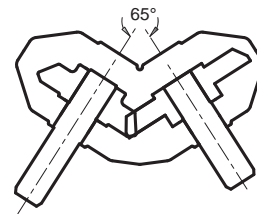
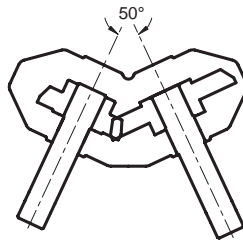
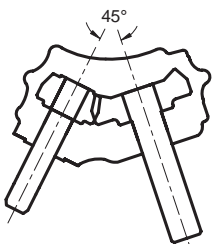
1. Power rating varies with ratio and speed
2. Various ratios, shaft configurations and housing styles are offered
3. Consult *Weasler Applications Engineering* to discuss details and availability

## 68° GEARBOXES



SERIES	HOUSING TYPE	MAX POWER RATING @ 1:1 RATIO				MAX SHAFT DIAMETER	
		540 RPM		1000 RPM		INCH	MM
		HP	KW	HP	KW		
2168	ONE PIECE	20	14.9	35	26.1	1.25	31.75
4168	ONE PIECE	45	33.6	75	55.9	1.38	35.05

## HIGH ANGLE GEARBOXES



SERIES	HOUSING TYPE	MAX POWER RATING				MAX SHAFT DIAMETER		
		RATIO	540 RPM		1000 RPM		INCH	MM
			HP	KW	HP	KW		
5045	SPLIT CASE	1.8:1	33	24.6	56	42.0	1.75	44.45
5050	SPLIT CASE	1.6:1	45	33.6	76	56.7	1.75	44.45
5065	SPLIT CASE	1.6:1	47	35.0	79	58.9	1.75	44.45

### NOTE:

1. Power rating varies with ratio and speed
2. Various ratios, shaft configurations and housing styles are offered
3. Consult *Weasler Applications Engineering* to discuss details and availability

## **GEARBOX SPECIFICATIONS**

---

### **SHAFTING:**

- SHAFTING IS MADE FROM 5140 STEEL
- INTEGRAL GEAR/SHAFTS ARE MADE FROM 5120 STEEL

### **GEARS:**

- ALL GEARS ARE MADE FROM 5120 STEEL
  - *Straight bevel, forged blank cut tooth gears are standard*
  - *As forged gears are available depending on quantity*
  - *Spiral bevel gears are optional on some units*

### **BEARINGS:**

- TAPERED ROLLER BEARINGS ARE STANDARD

### **SEALS:**

- DOUBLE LIP SEALS
- VITON SEALS FOR HIGH SPEED APPLICATIONS

### **PAINT & OIL:**

- ALL ONE-PIECE CAST GEARBOXES ARE PAINTED BLACK AS STANDARD
- GEARBOXES ARE SHIPPED WITHOUT OIL AS STANDARD

## **GEARBOX ANALYSIS**

---

- ENGINEERING ASSISTANCE IS AVAILABLE ON AN AS REQUESTED BASIS  
CONTACT WEASLER APPLICATIONS ENGINEERING AT:  
TELEPHONE: (262)338-2161 OR  
E-MAIL AT: [oemapplications@weasler.com](mailto:oemapplications@weasler.com)